

CAUTION
Before use, thoroughly read MAXAIR CAPR P/N 03521015 User Instruction received with all CAPR Helmets and available at www.maxair-systems.com.



REF 2180-05
P/N 01031664

Symbol Definitions

Warning, Caution, or Note

REF Catalog Number **P/N** NIOSH Number

WARNING

Failure to follow User Instructions P/N 03521015 and the instructions contained herein may be hazardous to the user's health.

Use only if package is received unopened and contents are undamaged. If damage is noted, contact the shipper for replacement or repair.

Prior to using any MAXAIR® System or component, be sure to be familiar with the system's NIOSH approved configuration.

DO NOT use if any component is damaged. If any components are damaged or contaminated and therefore unfit for safe and effective use, they should be replaced immediately.

Only trained and experienced personnel who have read and understand the User Instructions should use MAXAIR Products.

The institution using this product in any application is responsible for determining the appropriateness of this equipment relative to regulatory requirements. Bio-Medical Devices Intl, Inc. does not recommend the appropriate systems for a particular institution or facility.

Use only MAXAIR Systems/ NIOSH approved compatible components.

NOT for use in atmospheres immediately dangerous to life or health (IDLH), and atmospheres containing less than 19.5% oxygen, or more than 25% oxygen.

Flammability Level I: fabric may burn if exposed to open flame.

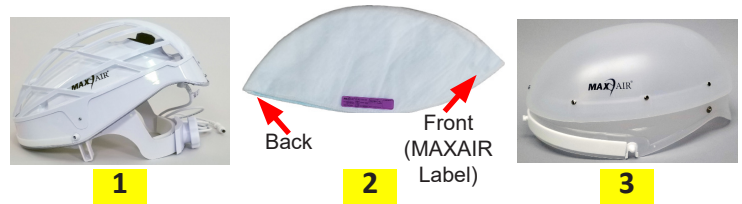
Follow current local regulations governing biohazard waste to safely dispose of single use MAXAIR Products.

If you need more information, contact your BMDI Sales Representative, or call BMDI customer service at 1-800-443-3842.

Intended Use

The MAXAIR® CAPR® 2180-05 Filter Cap is a NIOSH approved HE filter for use with a CAPR Powered Air Purifying Respirator Helmet with Cage, Filter Cover Cap, and DLC and DLC2 Lens Cuffs. The 2180-05 provides HE Level protection against airborne particulate contaminants.

System Assembly Components



1) 2081-03 Helmet with 2071-08 Liner, 2051-07 Cage, 2590-05 Power Cord	2) 2180-05 Filter Cap
	3) 2061-08 Filter Cover Cap (FCC)

Specifications

FILTER	APF	EFFICIENCY
2180-05	25	≥ 99.97%

FILTER	MATERIAL
2180-05	Electrostatic Polypropylene, Electrostatic Modified Acrylic

MAXAIR Recommended System Temperature Limits:

Use/Handling: 0°C to 54°C at a maximum 80% Relative Humidity.
Charging: 0°C to 45°C at a maximum 80% Relative Humidity.
Storage: 0°C to 35°C at a maximum 80% Relative Humidity.

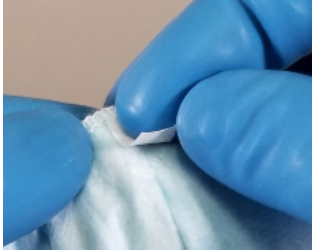
All MAXAIR Systems, components, and disposables are latex free.

Regulatory

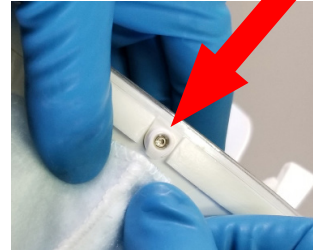
NIOSH HE

CAUTION
There are adhesive strips on the inside of the Filter Cap in four places, front, rear, and both sides. Each adhesive strip has a protective cover over it that needs to be peeled off before adhering each of the four adhesive strips to the Helmet.

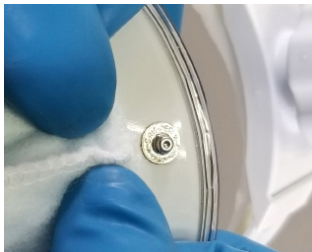
Assemble Filter Cap to Helmet



1. Remove the protective cover from the four attachment adhesive strips:
 - A. Either all at once, and then proceed to steps 2-4,
 - B. Or, in sequence with each of steps 2-4, i.e., (2) remove and attach at front, (3) remove and attach at rear, (4) remove and attach one side, and finally (4) remove and attach other side.



2. Align the center line of the Filter Cap with the center of the Helmet. Pull the Filter Cap front down to nearly touching the Helmet front Lens mount and press the adhesive strip to Helmet.



3. Pull the Filter Cap rear down just enough to cover the rear tab of the Helmet Cage and no closer to the rear snap, and press the adhesive strip to the Helmet.

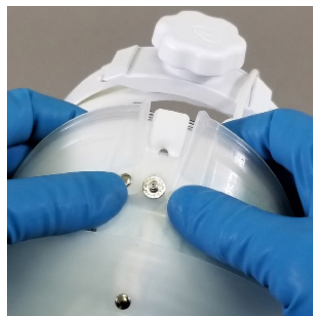


4. Pull each Filter Cap side over the side of the Helmet and down just to cover the side tabs of the Helmet Cage, and press each side adhesive to the Helmet.

Assemble Filter Cover Cap over Filter Cap and onto the Helmet



1. Place the Helmet front attachment adapter into the inside of the Filter Cover Cap (FCC) front attachment adapter.



2. Pull the FCC over and down onto the Helmet and Filter Cap. Use thumbs to push FCC fully down over the Filter Cap and onto the Helmet.



3. With the FCC fully down on the Helmet the T-Tab can be snapped and secured to the lower snap on the back of the Helmet.

Dis-assemble Filter Cover Cap From Filter Cap and Helmet

Lift up the FCC T-Tab to unlock the FCC from the Helmet; lift back of the FCC up. Continue to lift the FCC up and forward off the Helmet.

Dis-assemble Filter Cap From Helmet

Successively lift each adhesive strip of the Filter Cap off the Helmet and pull that portion of the Filter Cap away from the Helmet; start with the rear adhesive strip, then one side strip, then the other side, and finally the front, then remove the entire Filter Cap completely from the Helmet.

Dispose of the Filter Cap

Dispose of the Filter Cap per institutional protocol for hazardous waste.