



CAUTION

Before use, thoroughly read MAXAIR CAPR P/N 03521015 User Instruction (received with all CAPR Helmets and available at www.maxair-systems.com).



REF 2365-02SM
REF 2365RB-02SM*
P/N 01031316
 Small-Medium

REF 2365-02ML
REF 2365RB-02ML*
P/N 01031291
 Medium-Large

*RB indicates plastic reusable dispensing box vs. standard cardboard.

Symbol Definitions



Warning, Caution, or Note



Catalog Number



NIOSH Number



WARNING

Failure to follow User Instructions P/N 03521015 and the instructions contained herein may be hazardous to the user's health.

Use only if package is received unopened and contents are undamaged. If damage is noted, contact the shipper for replacement or repair.

Prior to using any MAXAIR® System or component, be sure to be familiar with the system's NIOSH approved configuration.

DO NOT use if any component is damaged. If any components are damaged or contaminated and therefore unfit for safe and effective use, they should be replaced immediately.

Only trained and experienced personnel who have read and understand the User Instructions should use MAXAIR Products.

The institution using this product in any application is responsible for determining the appropriateness of this equipment relative to regulatory requirements. Bio-Medical Devices Intl, Inc. does not recommend the appropriate systems for a particular institution or facility.

Use only MAXAIR Systems/ NIOSH approved compatible components.

NOT for use in atmospheres immediately dangerous to life or health (IDLH), and atmospheres containing less than 19.5% oxygen, or more than 25% oxygen.

Flammability Level I: fabric may burn if exposed to open flame.

Follow current local regulations governing biohazard waste to safely dispose of single use MAXAIR Products.

If you need more information, contact your BMDI Sales Representative, or call BMDI customer service at 1-800-443-3842.

Intended Use

The MAXAIR DLC is to be donned with a MAXAIR CAPR® Helmet and a MAXAIR Filter Cartridge.

CAPR DLC Systems filter aerosolized and droplet particulates.

DLCs are designed for single use applications.

Standard CA-DLC-CAPR-36 System¹ with DLC



1. 2081-03 Helmet with 2051-07 SnapOn Cage removed, 2071-08 Liner, and 2590-05 Power Cord	2. 2167-10 Filter Cartridge*
	3. 2061-08 Filter Cover Cap (FCC)
4. 2500-36TSC Battery**	5. 2000-76 Battery Belt
6. 2600-01 Battery Charger***	7. 2365-02 DLC ML & SM

* Alternate Filters include the 2180-05, 2166-10, and 2164-10
 ** Alternate Batteries include the 2500-37TSC
 *** Alternate Charger includes the 2602-01.

Specifications

MAXAIR Recommended System Temperature Limits:

Use/Handling: 0°C to 54°C at a maximum 80% Relative Humidity.
 Charging: 0°C to 45°C at a maximum 80% Relative Humidity.
 Storage: 0°C to 35°C at a maximum 80% Relative Humidity.

All MAXAIR Systems, components, and disposables are latex free.

Materials

DLC Lens is PETG
 DLC Cuff is Polyurethane

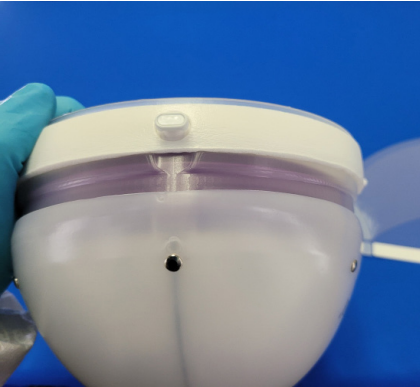
Regulatory

NIOSH

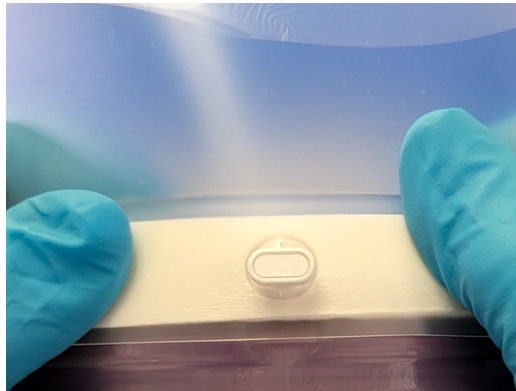
WARNING
Always start with the ML size unless the wearer has a very small head size.
The DLC Cuff side must face to the inside of the Helmet; the Lens side must face to the outside of the Helmet.

NOTE
This shows the 2081-03 Helmet with 2061-08 FCC; it is similar for the 2083-03 Helmet and 2061-04A Hard Hat.

Assembly



1. Secure the Helmet/FCC in your lap with the Helmet front facing up, and the top of the Helmet facing in towards you.

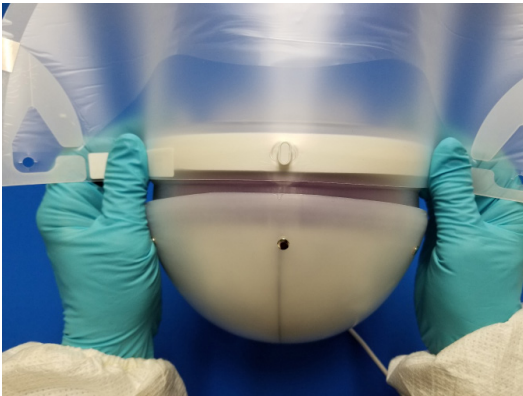


2. Align the FCC front TurnClip horizontally, snap the DLC Front Alignment Hole over the TurnClip, then position the TurnClip vertically to lock the DLC in place.

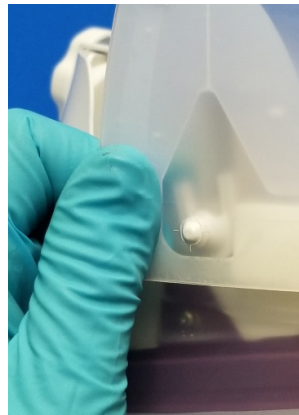


3. Ensure the DLC Front alignment hole is centered on the Front Turn Clip.

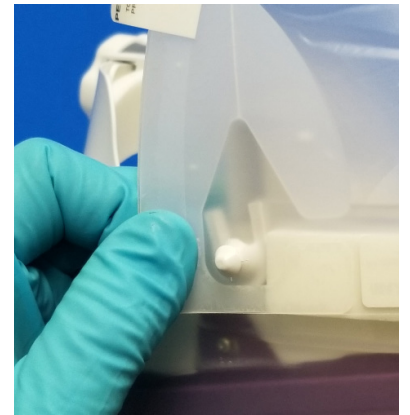
Assembly Steps 4-6 Option A



4. With thumbs pressing the DLC against the FCC front white foam strip, press and slide your thumbs down each DLC side until you can grasp each end of the DLC at the Flappers.



5. Pull each DLC side down towards the Helmet back and tightly against the white foam strip, position each side DLC Mounting Hole as centered as possible over each respective FCC side Mounting Post.

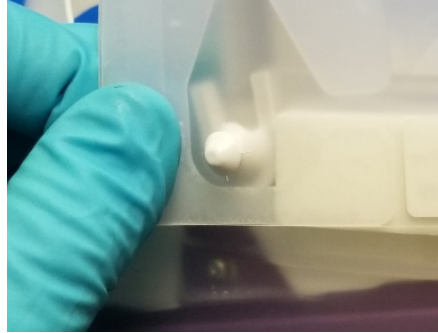


6. Press the DLC tightly against the FCC to secure the Mounting Hole onto each Mounting post. (You will hear an audible "click" when properly secured).

Assembly Steps 4-6 Option B



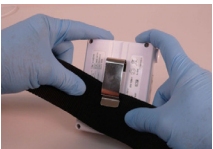
4. The DLC Front Alignment Hole secured, grasp one DLC end by the Flapper and stretch it tautly until that side Mounting Hole is over that side Mounting Post.



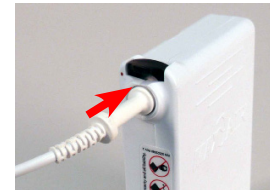
5. That side DLC Mounting Hole centered over the FCC side Mounting Post, press the DLC down fully onto the Mounting Post. An audible click indicates the DLC is properly around and down securely on the Mounting Post.

6. Repeat steps 4. and 5. for the other side.

Donning



1. Place the Belt top edge under the Battery Clip, with the Belt fully under and up to the Clip top. Place the belt around the waist with the battery near the side-back of the right hip.



2. Connect the Helmet Power Cord to the Battery. Push the Power Cord Connector into the Battery Receptacle until the Secure Connection audibly clicks.



3. Loosen the rear Headband Adjustment Knob by turning it counterclockwise.



4. Hold the Helmet at the rear headband, pull the DLC Cuff down, place your chin into the DLC Cuff. Pull the Helmet over and down on your head.



5. Tighten the rear Headband Adjustment Knob (clockwise). Ensure a tight but comfortable fit for all activities.



6. Slide your fingers between Cuff and face from temples down under the chin to pull the DLC Flappers away from the lens, and properly position the cuff.



WARNING

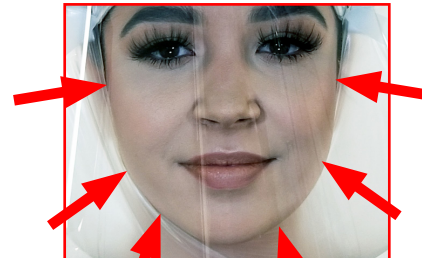
If conditions 1 and 2 both are not achieved, switch to the other size DLC and repeat Donning steps 1 through 6 above.



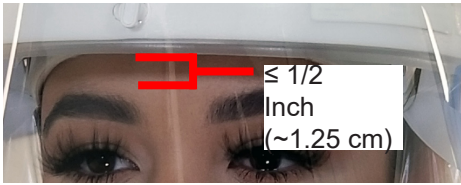
FCC Side Tabs

DLC Flappers

Condition 1: Ensure the DLC Flappers are away from the Lens, positioned perpendicular to your temples, and in front of the FCC Side Tabs.



Condition 2: Ensure slight tension on the cuff is felt continuously while sliding the index or first finger between the cuff and the face all along the chin and up to the temples, from the right side of the face to the left.



7. Position the Helmet so that the front headband is within 1/2 inch of the eyebrows and the rear headband is resting under the occipital bone above the vertebrae on the neck, and then tighten the Adjustment Knob clockwise to ensure the most secure fit of the helmet on the head for all activities. Do not over tighten to cause discomfort.



CAUTION

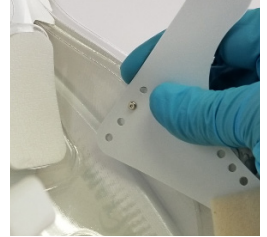
Optimum setting is achieved when the helmet is secure on the head for all movements required and the front headband is within 1/2 inch of the eyebrows to allow good visualization of the LED Safety Status Indicators in the upper peripheral vision.



CAUTION

If the Helmet is not secure and comfortable, it may be necessary to change the Height Adjustment, which raises and lowers the rear headband and the Helmet angle with respect to the head, and properly positions the DLC Lens from the chin. Together with the Adjustmont Knob they optimize a secure and comfortable fit and proper positioning for easy visualization of the LED Safety Status Indicators. To adjust, unsnap the Height Adjustment tabs on each side of the Helmet Liner and reposition upward or downward. .

Be sure to have both Height Adjustment tabs in the same position.



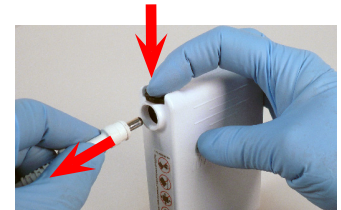
Doffing



1. Loosen the rear Headband Adjustment Knob (turn counterclockwise).



2. Pull the DLC Cuff away from the chin and lift the Helmet up, forward, and off the head.



3. Disconnect Battery from the Helmet - push Secure Connection Button down, pull Cord Connector out, release Button.



4. Disconnect the Battery Belt from around the waist by un-snapping the buckle.



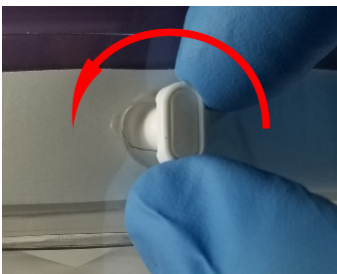
5. With the Charger connected to the mains wall power, push the Charger Cord Connector into the Battery Receptacle until it is fully seated.



WARNING

Refer to Section 9, User Instruction Manual P/N 03521015, for details on proper use of chargers and for charging batteries.

Disassembly



1. Align FCC front TurnClip horizontally.



2. Grasp both side DLC Flappers and lift out and away from the FCC Side Attachment Posts.



3. Continue to pull the DLC forward off the front TurnClip and away from Helmet. Dispose of the DLC according to your institution's protocol for contaminated waste.