



CAUTION

Before use, refer to the CAPR® User's Instructions, P/N 03521015 (received with all CAPR Helmets) for details.



REF 2281PR-100ML
P/N 07631127

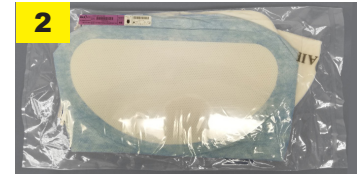
REF 2281PR-100SM
P/N 07631126

Intended Use

The MAXAIR® CAPR® 2281PR-100 Hoods are for use with MAXAIR 2084-03 Helmets with assembled 2099-09 ChinBars. These Hood Systems provide high efficiency particulate filtration performance, and 360° Head and Neck contact protection.

Hoods are designed for single use applications.

Typical System Components



1. 2084-03 Helmet w/2099-02 Chinbar	2. 2281PR-100 Hood
3. 2500-36TSC Battery ¹	4. 2000-76 Battery Belt
5. 2600-01 Battery Charger	

¹ The 2500-37TSC is an alternate to the 2500-36TSC.

Symbol Definitions



Warning, Caution, or Note

REF Catalog Number **P/N** NIOSH Number



WARNING

Use only if package is received unopened and contents are undamaged. If damage is noted, contact the shipper for replacement or repair.

Prior to using any MAXAIR® System or component, be sure to be familiar with the system's NIOSH approved configuration.

DO NOT use if any component is damaged. If any components are damaged or contaminated and therefore unfit for safe and effective use, they should be replaced immediately.

Only trained and experienced personnel who have read and understand the User's Instructions should use this product.

Failure to follow the User's Instructions, these and in the MAXAIR Systems User's Instructions, P/N 03521015, may be hazardous to the user's health.

The institution using this product in any application is responsible for determining the appropriateness of this equipment relative to regulatory requirements. Bio-Medical Devices Intl, Inc. does not recommend the appropriate systems for a particular institution or facility.

Use only MAXAIR Systems/ NIOSH approved compatible components.

NOT for use in atmospheres immediately dangerous to life or health (IDLH), and atmospheres containing less than 19.5% oxygen, or more than 25% oxygen.

Flammability Level I: fabric may burn if exposed to open flame.

Follow current local regulations governing biohazard waste to safely dispose of used shrouds.

If you need more information, contact your BMDI Sales Representative, or call BMDI customer service at 1-800-443-3842.

Recommended System Temperature Limits

Use/ Handling	0°C to 54°C at a maximum 80% Relative Humidity
Charging	0°C to 45°C at a maximum 80% Relative Humidity
Storage	0°C to 35°C at a maximum 80% Relative Humidity

Regulatory

NIOSH PAPR100-N



CAUTION

Before use, always refer to the CAPR® User's Instructions, P/N 03521015 (received with all CAPR Helmets) for details.

Don Battery, Belt, Helmet and Hood

A



B



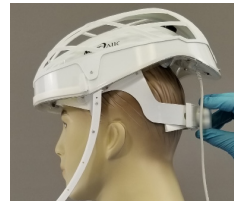
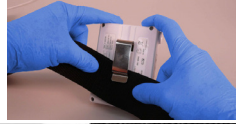
C



D



- A. 2500-36TSC Battery
- B. 2000-76 Belt
- C. 2084-03 Helmet
- D. 2281PB-100 Hood



CAUTION

Ensure that the front Helmet headband is within about 1/2 inch of the eyebrows so that the Safety LEDs are clearly visible in the upper peripheral vision with the Hood donned.

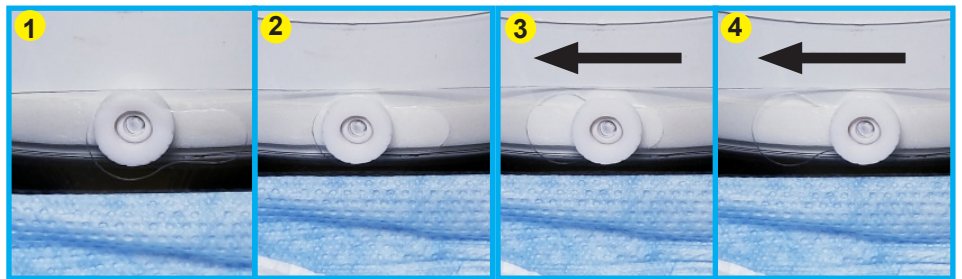
1. Remove all wearer System Components from their packaging, ensure they are ready for use, and lay them on a clean counter/surface.

2. Assemble the Battery onto a double layer of Belt. Place top edge of Belt under the Battery Clip, up to the Clip top, so the Clip Detent rests on the Clip Base and NOT the Belt. Place the belt comfortably around the waist with the battery near the side-back of the right hip.

3. Don Helmet by first loosening Ratchet Knob (CCW) then place Helmet over and down on head. Tighten Ratchet Knob (CW) as tight as comfortable to secure for all activities.

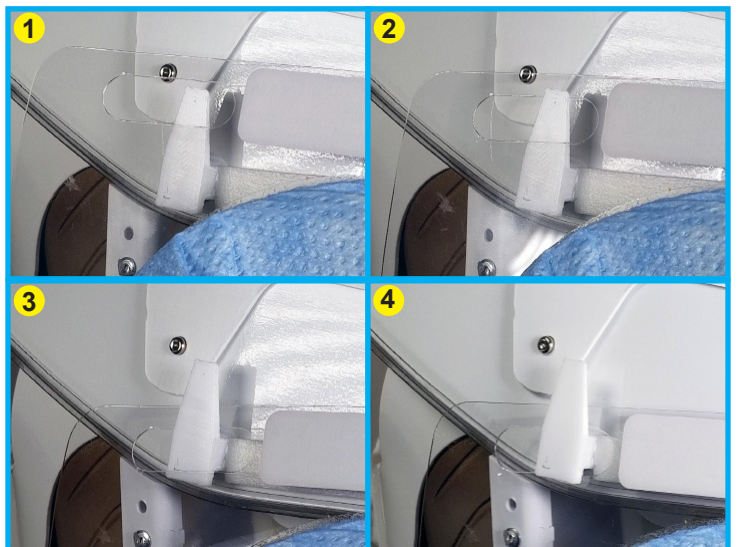


4. Attach center Hood-Lens: Bow Lens sides away from helmet, place Lens center mounting hole with slot over Helmet center mounting adapter (1-2), then slide Lens to the side to lock in slotted position (3-4).



5. Attach (snap) one side Hood-Lens mounting hole to respective Helmet side adapter: Place one side Lens slot over top of adapter (1), tilt lens top towards Helmet to "hook" top of mounting hole over top of side adapter (2), slide Lens slot down to bottom of side adapter (3), press down and in on lens to "hook" bottom of Lens slot under bottom extension of side adapter to secure Lens to Adapter.

Repeat this step for other side adapter.





6. Grasp the back bottom Hood Shroud (either from the inside of the Hood as shown, or from the outside of the Hood) and pull the Hood over the Helmet and down in back.

7. If Hood Filter is wrinkled in front, use one hand to secure the Hood at the Lens bottom (either from under the Hood as shown, or from the outside of the Hood) and use the other hand to grasp the Shroud just below the Filter in back and pull down until all folds in the filter are removed. Ensure the Hood is down, all around.



8. With the Hood front Shroud down, the NeckTie and its Size-Snaps indicate three settings for wearer neck sizes; Neck diameters of 13-15 in., 16-17 in., and 18-19.5 in.



9. Pull the NeckTie ends around to back by briskly and quickly pulling the ends free from their velcro clasp.



10. Snap the left NeckTie end Snap to the appropriate Size-Snap on the right Necktie end.



11. The Hood should be secure within about an inch of the neck to ensure a good fit and allow complete freedom of head movement.

Doff the Hood and Helmet



1. Roll up Hood from Shroud back bottom up and over to top front of Helmet.



2. Lift out and unsnap each side Lens slot bottom and then lift Lens sides up and off Helmet.



4. Loosen the rear Headband Adjustment Knob (turn counterclockwise).



3. Slide Front Lens mounting hole back over Helmet front adapter and lift lens and Hood fully away from Helmet. Continue to roll Hood inside-over-outside until Hood is fully away from body, and discard appropriately for contaminated waste.



5. Lift Helmet up and off head.

Doff Battery and Belt



1. Unbuckle Belt and remove Battery and Belt from around the waste.



2. Disconnect the Helmet Power Cord from the Battery - Press down on the Secure Lock (Black) Button to release, then pull the cord connector out from the Battery connection receptacle.



3. Connect a powered on Battery Charger connector to the Battery. Push connector into Battery receptacle fully - Do NOT push down on the Battery Secure Lock (Black) button.



WARNING

Refer to User's Instructions (P/N 03521015 for details on proper use of chargers and for charging batteries.